

H2Teesside Project

Planning Inspectorate Reference: EN070009

Land within the boroughs of Redcar and Cleveland and Stockton-on-Tees, Teesside and within the borough of Hartlepool, County Durham

Document Reference: 2.4a Integrated Works Plans

Planning Act 2008



Applicant: H2 Teesside Ltd

Date: October 2024

DOCUMENT HISTORY

DOCUMENT REF	2.4a		
REVISION	0		
AUTHOR	MARYSE BUOT		
SIGNED	MB	DATE	03.10.24
APPROVED BY	JORDAN LEWIS		
SIGNED	JL	DATE	03.10.24

The H2 Teesside Order 20[XX]



PROJECT
H2Teesside DCO

APPLICANT



CONSULTANT

AECOM Limited
100 Embankment,
Cathedral Approach,
Manchester, M3 7FB
www.aecom.com

LEGEND

- Order Limits
- Detailed Sheet Number
- Work No. 1A.1 – Phase 1 Hydrogen Unit
- Work No. 1A.2 – Phase 2 Hydrogen Unit
- Work No. 1B.1 – Water Connections and Water and Effluent Treatment Plant for Work Nos. 1A.1 and 1A.2
- Work No. 1B.2 – Water Connections and Water and Effluent Treatment Plant for Work No. 1A.2
- Work No. 1C – Above Ground Pressurised Hydrogen Storage
- Work No. 1D – Administration, Control Room and Stores
- Work No. 1E.1 – Connections and Ancillary Works in Connection with Work Nos. 1A.1, 1A.2, 1C and 1D
- Work No. 1E.2 – Connections and Ancillary Works in Connection with Work No. 1A.2

Infrastructure Planning (Applications: Prescribed Forms and Procedure) Regulations 2009 Regulation 5(2)(j).



NOTES

1: Reproduced from Ordnance Survey digital map data © Crown copyright 2024. All rights reserved. License number 0100031673.

APPLICATION REFERENCE

H2T_March24_DCO_2.4a_Rev0

ISSUE PURPOSE

FOR EXAMINATION

PROJECT NUMBER

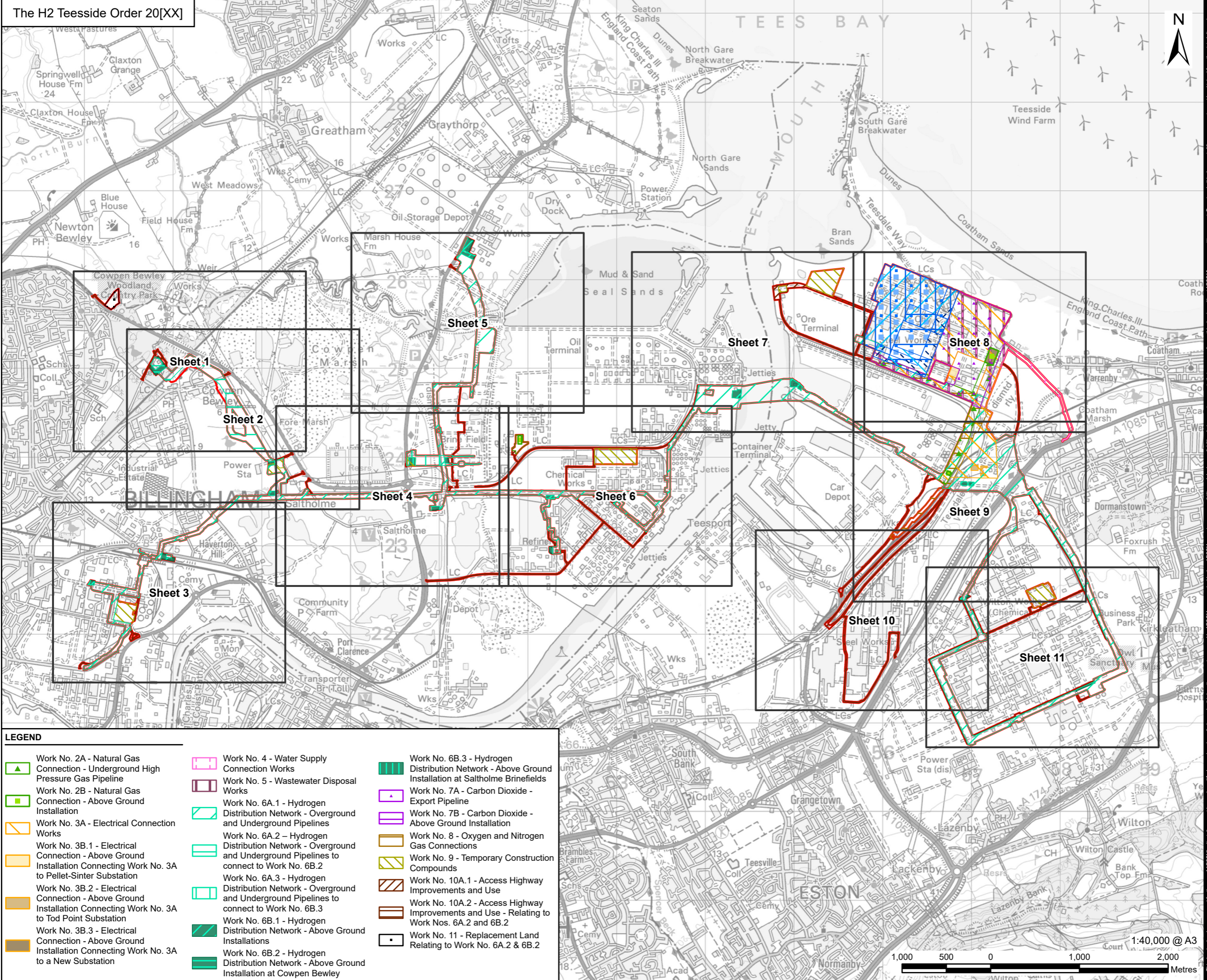
60689030

DRAWING TITLE

Work Plans Summary Key Plan

SHEET NUMBER

Sheet 1 of 1



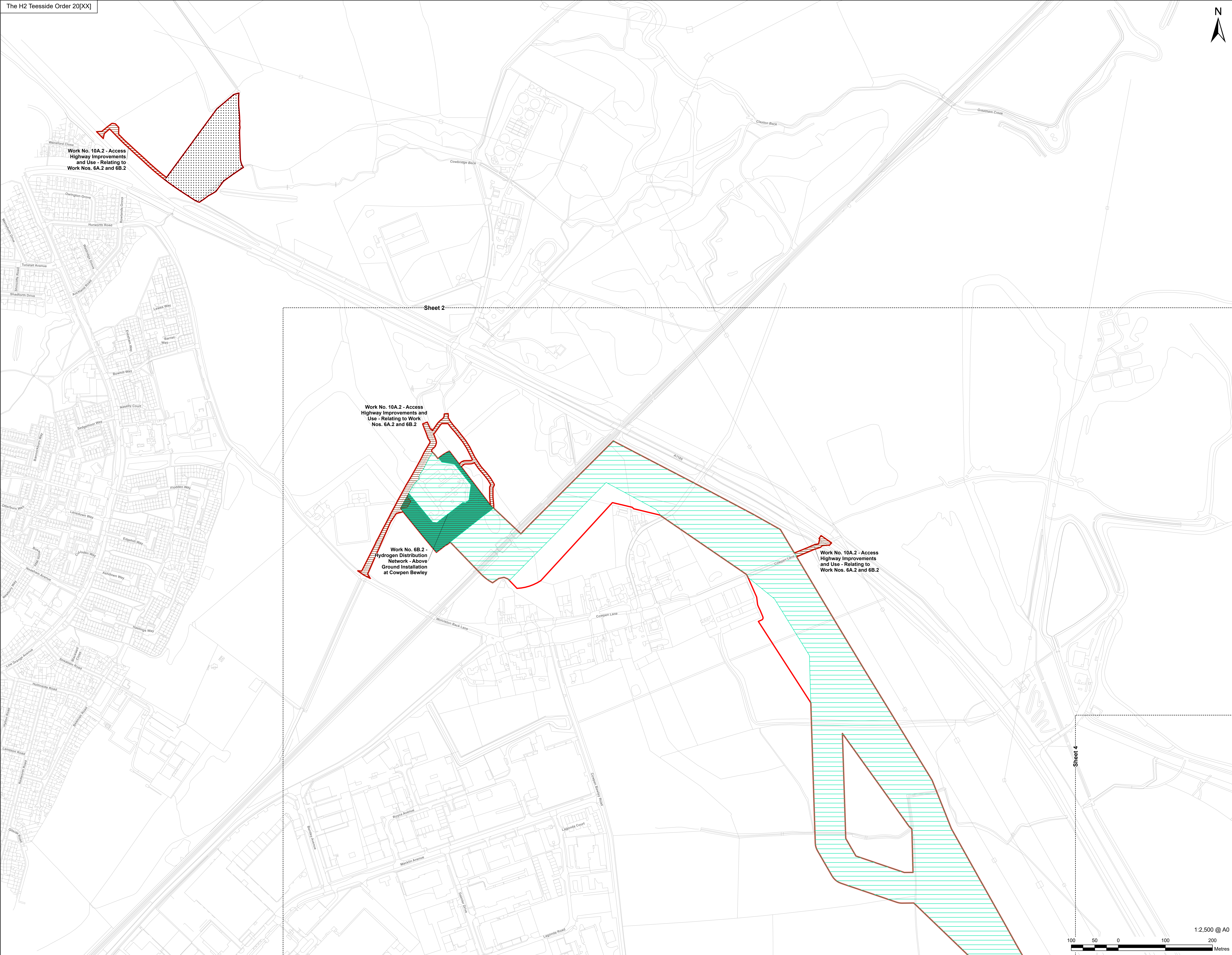
LEGEND

- | | | |
|--|--|--|
| Work No. 2A - Natural Gas Connection - Underground High Pressure Gas Pipeline | Work No. 4 - Water Supply Connection Works | Work No. 6B.3 - Hydrogen Distribution Network - Above Ground Installation at Saitholme Brinefields |
| Work No. 2B - Natural Gas Connection - Above Ground Installation | Work No. 5 - Wastewater Disposal Works | Work No. 7A - Carbon Dioxide - Export Pipeline |
| Work No. 3A - Electrical Connection Works | Work No. 6A.1 - Hydrogen Distribution Network - Overground and Underground Pipelines | Work No. 7B - Carbon Dioxide - Above Ground Installation |
| Work No. 3B.1 - Electrical Connection - Above Ground Installation Connecting Work No. 3A to Pellet-Sinter Substation | Work No. 6A.2 - Hydrogen Distribution Network - Overground and Underground Pipelines to connect to Work No. 6B.2 | Work No. 8 - Oxygen and Nitrogen Gas Connections |
| Work No. 3B.2 - Electrical Connection - Above Ground Installation Connecting Work No. 3A to Tod Point Substation | Work No. 6A.3 - Hydrogen Distribution Network - Overground and Underground Pipelines to connect to Work No. 6B.3 | Work No. 9 - Temporary Construction Compounds |
| Work No. 3B.3 - Electrical Connection - Above Ground Installation Connecting Work No. 3A to a New Substation | Work No. 6B.1 - Hydrogen Distribution Network - Above Ground Installations | Work No. 10A.1 - Access Highway Improvements and Use |
| | Work No. 6B.2 - Hydrogen Distribution Network - Above Ground Installation at Cowpen Bewley | Work No. 10A.2 - Access Highway Improvements and Use - Relating to Work Nos. 6A.2 and 6B.2 |
| | | Work No. 11 - Replacement Land Relating to Work No. 6A.2 & 6B.2 |

This drawing has been prepared for the use of AECOM's client. It may not be used, modified, reproduced or relied upon by third parties, except as agreed by AECOM or as required by law. AECOM accepts no responsibility, and denies any liability whatsoever, to any party that uses or relies on this drawing without AECOM's express written consent. Do not scale this document. All measurements must be obtained from the stated dimensions.



- Order Limits
- Detailed Sheet Number
- Work No. 6A.2 - Hydrogen Distribution Network - Overground and Underground Pipelines to connect to Work No. 6B.2
- Work No. 6B.2 - Hydrogen Distribution Network - Above Ground Installation at Cowpen Bewley
- Work No. 10A.2 - Access Highway Improvements and Use - Relating to Work Nos. 6A.2 and 6B.2
- Work No. 11 - Replacement Land Relating to Work No. 6A.2 & 6B.2



Work No. 10A.2 - Access Highway Improvements and Use - Relating to Work Nos. 6A.2 and 6B.2

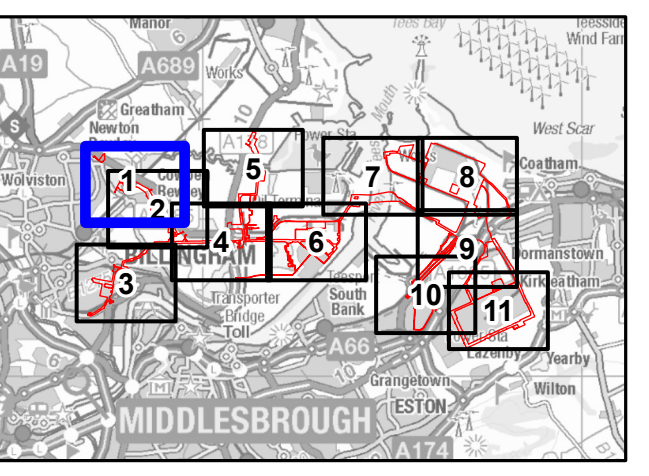
Work No. 6B.2 - Hydrogen Distribution Network - Above Ground Installation at Cowpen Bewley

Work No. 10A.2 - Access Highway Improvements and Use - Relating to Work Nos. 6A.2 and 6B.2

Sheet 2

Sheet 4

Infrastructure Planning
(Applications: Prescribed Forms and Procedure) Regulations 2009
Regulation 5(2)(j).



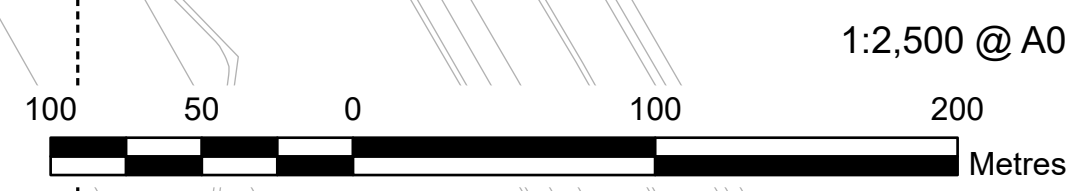
NOTES
1: Reproduced from Ordnance Survey digital map data © Crown copyright 2024. All rights reserved. License number 0100031673.
2: Contains Ordnance Survey Data © Crown Copyright and database right 2024.

APPLICATION REFERENCE
H2T_March24_DCO_2.4a_Rev0

ISSUE PURPOSE
FOR EXAMINATION
PROJECT NUMBER
60689030

DRAWING TITLE
Work Plans Summary

SHEET NUMBER
Sheet 1 of 11



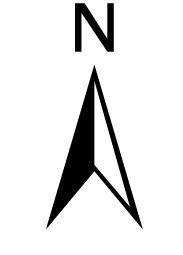
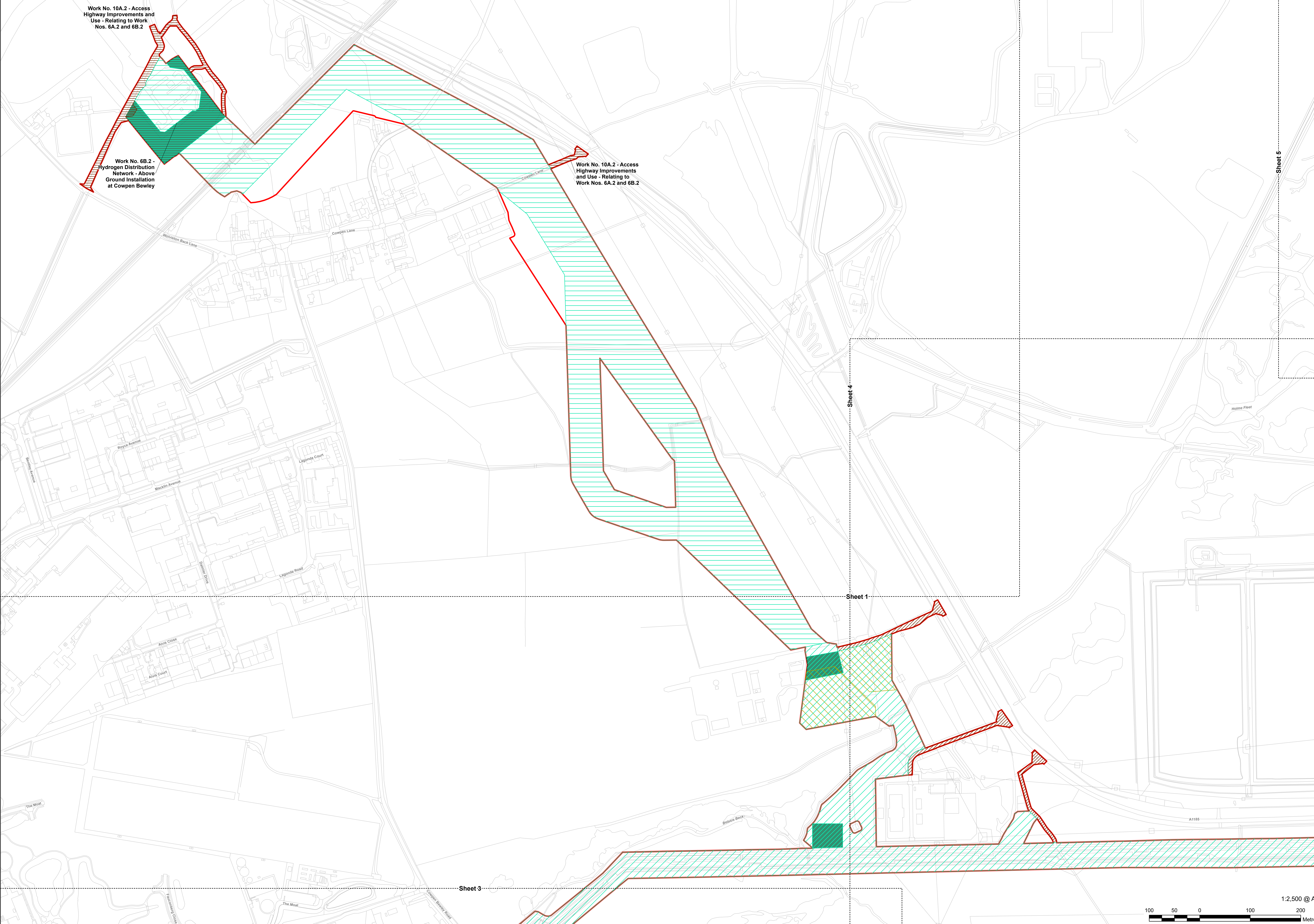
1:2,500 @ A0

This drawing has been prepared for the use of AECOM's client. It may not be used, modified, reproduced or relied upon by third parties, except as agreed by AECOM or as required by law. AECOM accepts no responsibility, and denies any liability, whatsoever, to any party that uses or relies on this drawing without AECOM's express written consent. Do not scale this document. All measurements must be obtained from the stated dimensions.



AECOM Limited
100 Embankment,
Cathedral Approach,
Manchester, M3 7FB
www.aecom.com

- Order Limits
- Detailed Sheet Number
- Work No. 6A.1 - Hydrogen Distribution Network - Overground and Underground Pipelines
- Work No. 6A.2 - Hydrogen Distribution Network - Overground and Underground Pipelines to connect to Work No. 6B.2
- Work No. 6B.1 - Hydrogen Distribution Network - Above Ground Installations
- Work No. 6B.2 - Hydrogen Distribution Network - Above Ground Installation at Cowpen Bewley
- Work No. 9 - Temporary Construction Compounds
- Work No. 10A.1 - Access Highway Improvements and Use
- Work No. 10A.2 - Access Highway Improvements and Use - Relating to Work Nos. 6A.2 and 6B.2



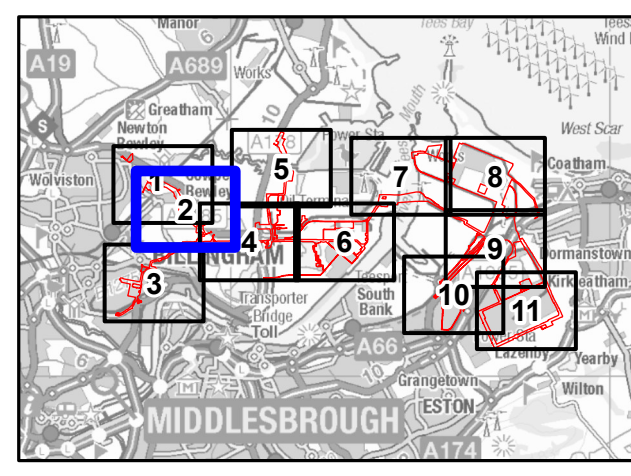
Sheet 5

Sheet 4

Sheet 1

Sheet 3

Infrastructure Planning
(Applications: Prescribed Forms and Procedure) Regulations 2009 Regulation 5(2)(j).



NOTES

- 1: Reproduced from Ordnance Survey digital map data © Crown copyright 2024. All rights reserved. License number 0100031673.
- 2: Contains Ordnance Survey Data © Crown Copyright and database right 2024.

APPLICATION REFERENCE

H2T_March24_DCO_2.4a_Rev0

ISSUE PURPOSE

FOR EXAMINATION

PROJECT NUMBER

60689030

DRAWING TITLE

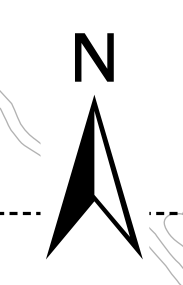
Work Plans Summary

SHEET NUMBER

Sheet 2 of 11

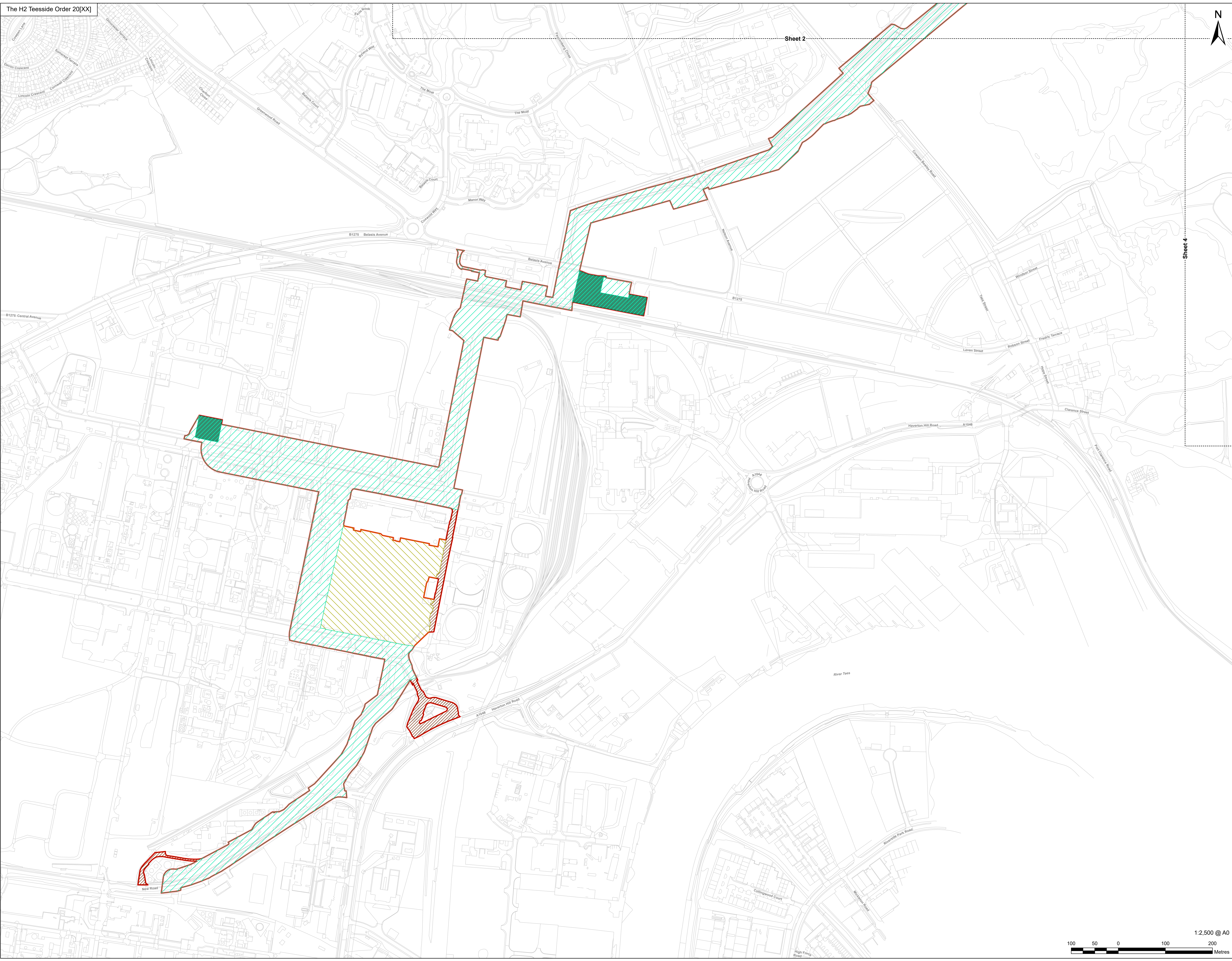


This drawing has been prepared for the use of AECOM's client. It may not be used, modified, reproduced or relied upon by third parties, except as agreed by AECOM, or as required by law. AECOM accepts no responsibility, and denies any liability, whatsoever, to any party that uses or relies on this drawing without AECOM's express written consent. All measurements must be obtained from the stated dimensions.

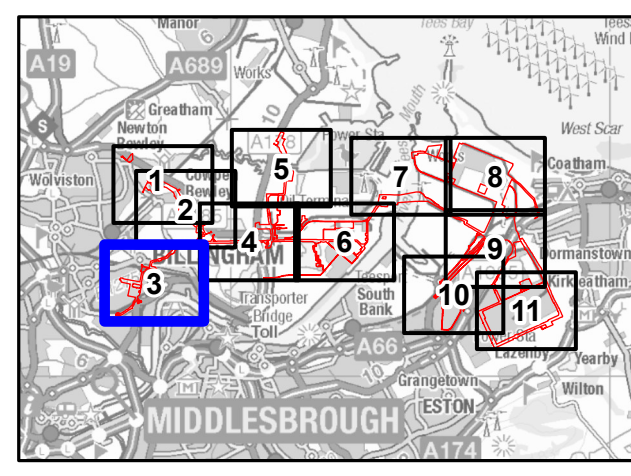


LEGEND

- Order Limits
- Detailed Sheet Number
- Work No. 6A.1 - Hydrogen Distribution Network - Overground and Underground Pipelines
- Work No. 6B.1 - Hydrogen Distribution Network - Above Ground Installations
- Work No. 9 - Temporary Construction Compounds
- Work No. 10A.1 - Access Highway Improvements and Use



Infrastructure Planning
(Applications: Prescribed Forms
and Procedure) Regulations 2009
Regulation 5(2)(j).



NOTES
1: Reproduced from Ordnance Survey digital map data © Crown copyright 2024. All rights reserved. License number 0100031673.
2: Contains Ordnance Survey Data © Crown Copyright and database right 2024.

APPLICATION REFERENCE
H2T_March24_DCO_2.4a_Rev0

ISSUE PURPOSE
FOR EXAMINATION

PROJECT NUMBER
60689030

DRAWING TITLE
Work Plans Summary

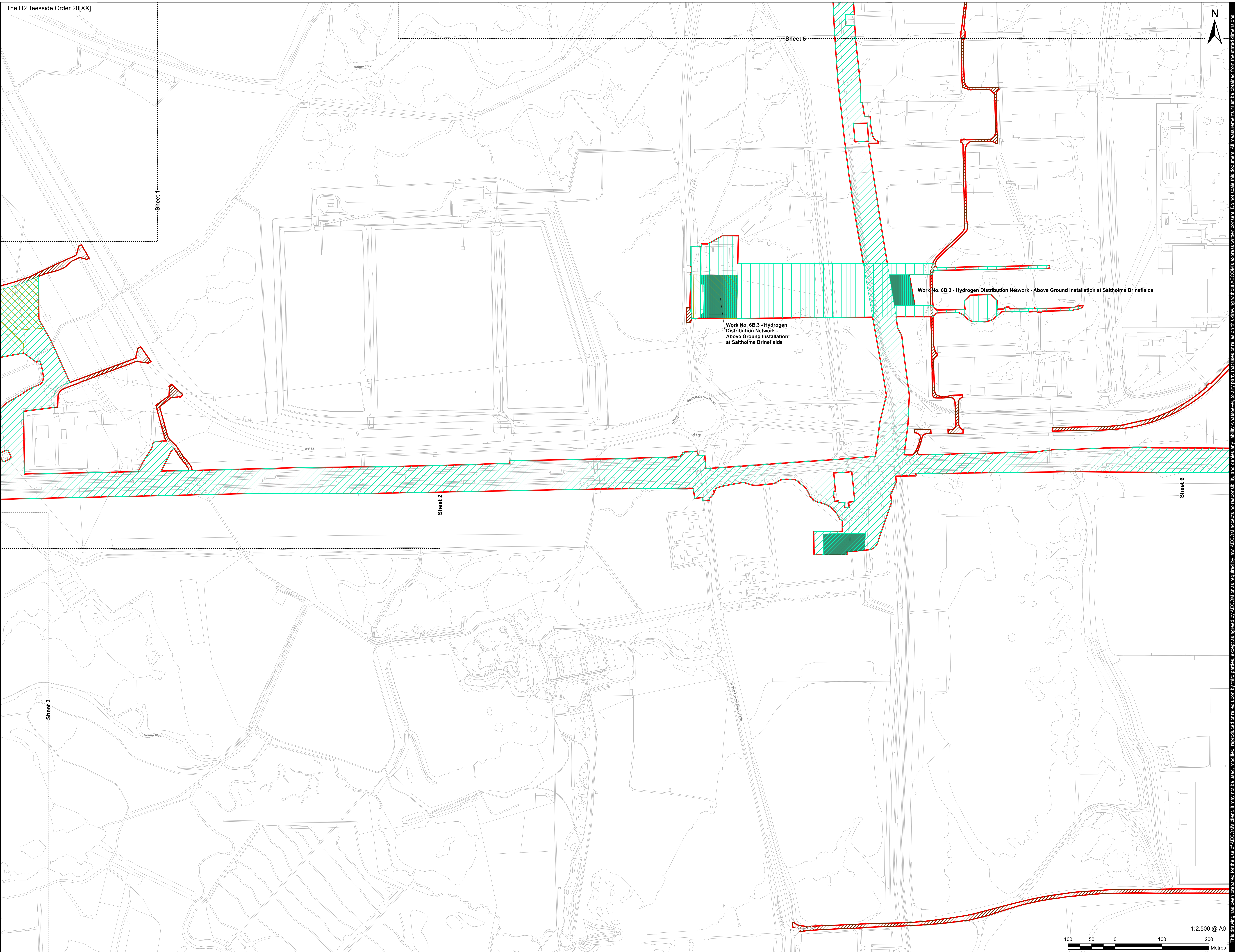
SHEET NUMBER
Sheet 3 of 11

This drawing has been prepared for the use of AECOM's client. It may not be used, modified, reproduced or relied upon by third parties, except as agreed by AECOM, or as required by law. AECOM accepts no responsibility, and denies any liability, whatsoever, to any party that uses or relies on this drawing without AECOM's express written consent. All measurements must be obtained from the stated dimensions.

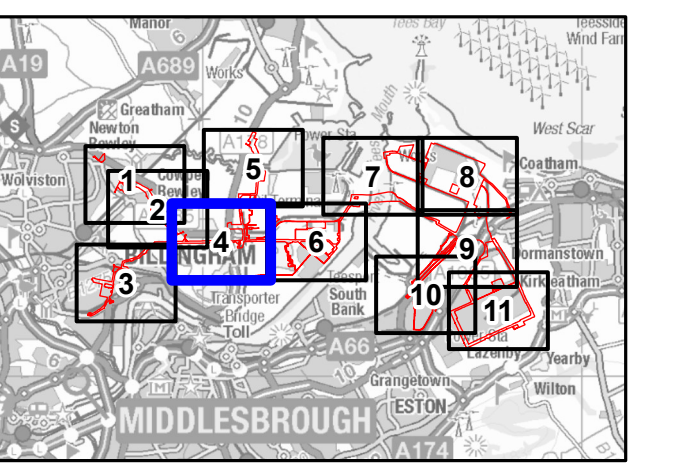


AECOM Limited
100 Embankment,
Cathedral Approach,
Manchester, M3 7FB
www.aecom.com

- Order Limits
- Detailed Sheet Number
- Work No. 6A.1 - Hydrogen Distribution Network - Overground and Underground Pipelines
- Work No. 6A.3 - Hydrogen Distribution Network - Overground and Underground Pipelines to connect to Work No. 6B.3
- Work No. 6B.1 - Hydrogen Distribution Network - Above Ground Installations
- Work No. 6B.3 - Hydrogen Distribution Network - Above Ground Installation at Saltholme Brinefields
- Work No. 9 - Temporary Construction Compounds
- Work No. 10A.1 - Access Highway Improvements and Use



Infrastructure Planning
(Applications: Prescribed Forms
and Procedure) Regulations 2009
Regulation 5(2)(j).



NOTES

- 1: Reproduced from Ordnance Survey digital map data © Crown copyright 2024. All rights reserved. License number 0100031673.
- 2: Contains Ordnance Survey Data © Crown Copyright and database right 2024.

APPLICATION REFERENCE

H2T_March24_DCO_2.4a_Rev0

ISSUE PURPOSE

FOR EXAMINATION

PROJECT NUMBER

60689030

DRAWING TITLE

Work Plans Summary

SHEET NUMBER

Sheet 4 of 11

1:2,500 @ A0



This drawing has been prepared for the use of AECOM's client. It may not be used, modified, reproduced or relied upon by third parties, except as agreed by AECOM, or as required by law. AECOM accepts no responsibility, and denies any liability, whatsoever, to any party that uses or relies on this drawing without AECOM's express written consent. Do not scale this document. All measurements must be obtained from the stated dimensions.








APPLICANT

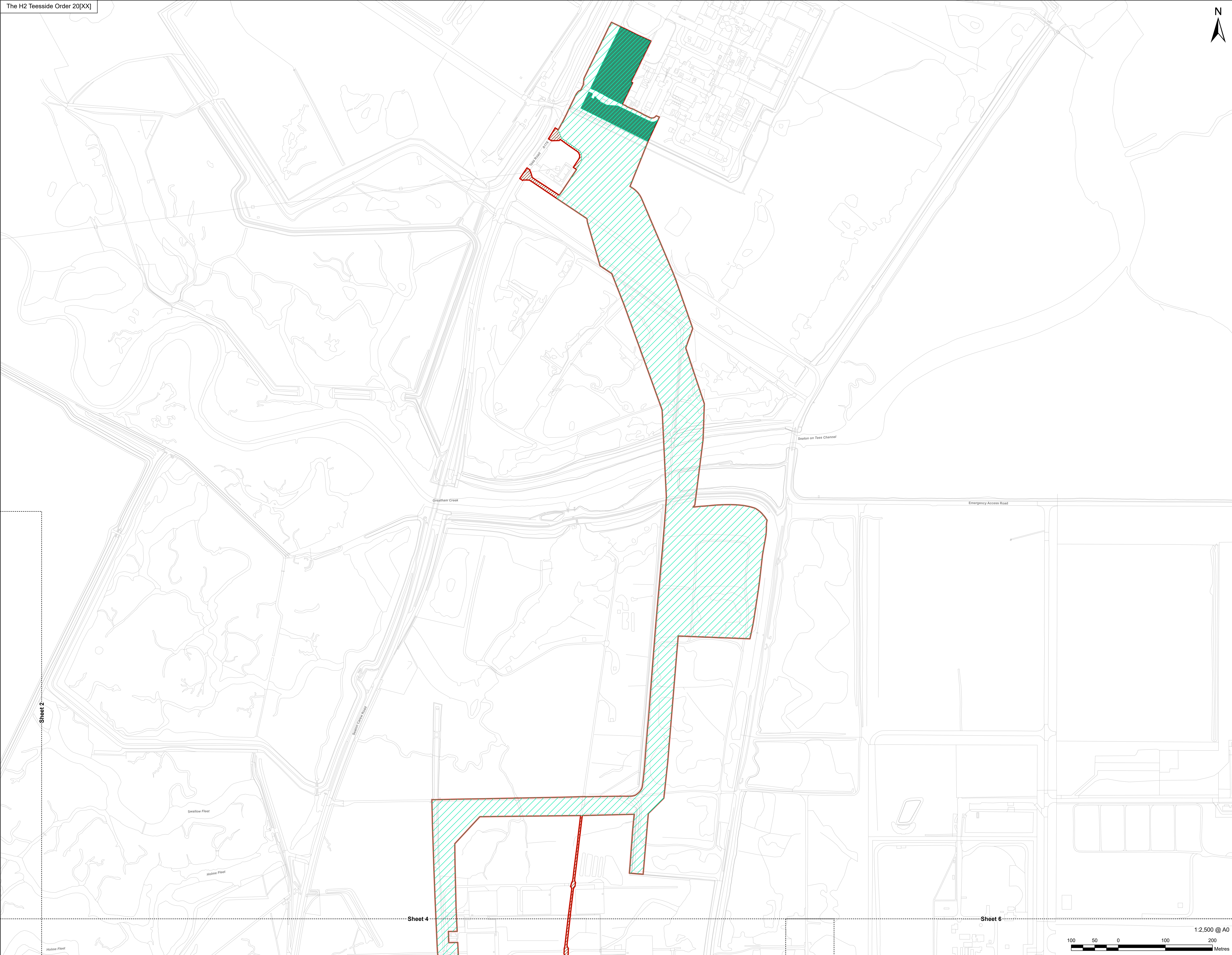


CONSULTANT

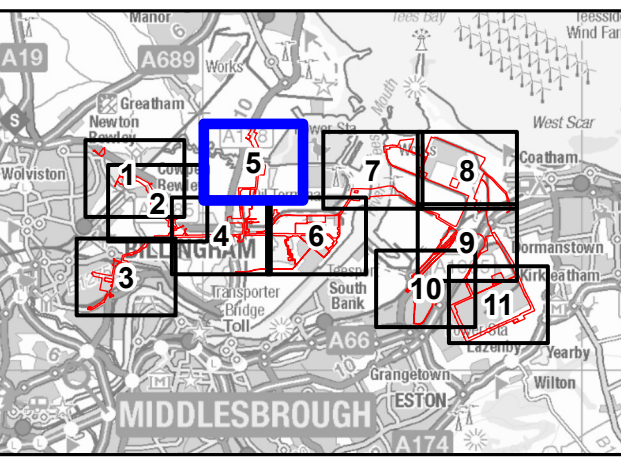
AECOM Limited
100 Embankment,
Cathedral Approach,
Manchester, M3 7FB
www.aecom.com

LEGEND

-  Order Limits
-  Detailed Sheet Number
-  Work No. 6A.1 - Hydrogen Distribution Network - Overground and Underground Pipelines
-  Work No. 6B.1 - Hydrogen Distribution Network - Above Ground Installations
-  Work No. 10A.1 - Access Highway Improvements and Use



Infrastructure Planning
(Applications: Prescribed Forms
and Procedure) Regulations 2009
Regulation 5(2)(j).



NOTES

- 1: Reproduced from Ordnance Survey digital map data © Crown copyright 2024. All rights reserved. License number 0100031673.
- 2: Contains Ordnance Survey Data © Crown Copyright and database right 2024.

APPLICATION REFERENCE

H2T_March24_DCO_2.4a_Rev0

ISSUE PURPOSE

FOR EXAMINATION

PROJECT NUMBER

60689030

DRAWING TITLE

Work Plans Summary

SHEET NUMBER

Sheet 5 of 11



This drawing has been prepared for the use of AECOM's client. It may not be used, modified, reproduced or relied upon by third parties, except as agreed by AECOM, or as required by law. AECOM accepts no responsibility, and denies any liability, whatsoever, to any party that uses or relies on this drawing without AECOM's express written consent. Do not scale this document. All measurements must be obtained from the stated dimensions.

Sheet 2

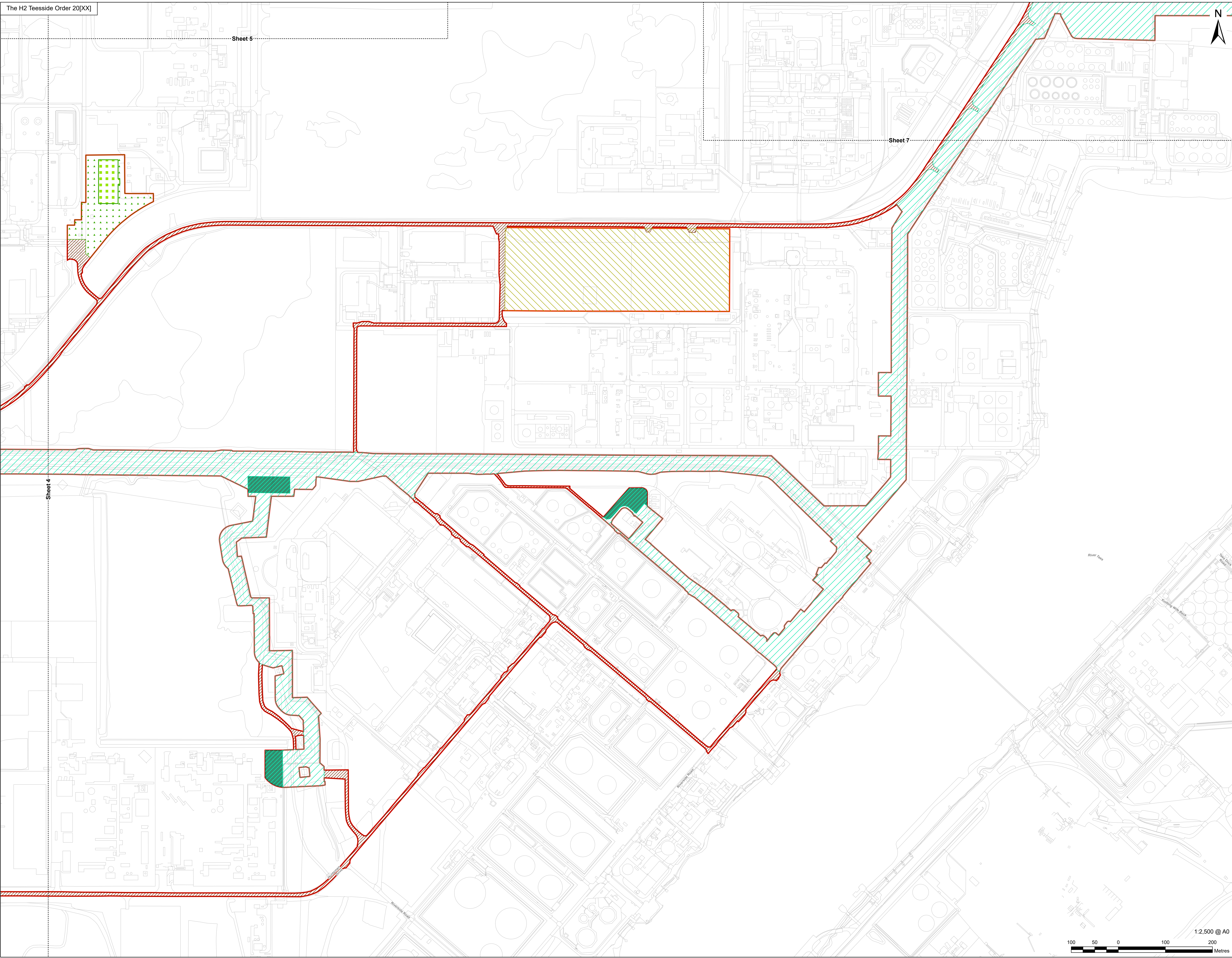
Sheet 4

Sheet 6

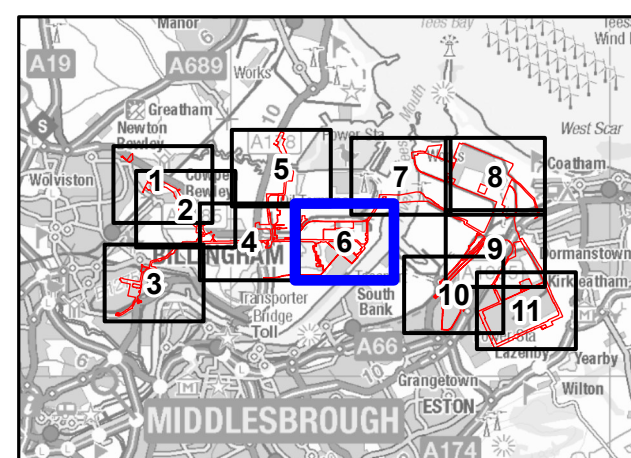


AECOM Limited
100 Embankment,
Cathedral Approach,
Manchester, M3 7FB
www.aecom.com

- Order Limits
- Detailed Sheet Number
- Work No. 2A - Natural Gas Connection - Underground High Pressure Gas Pipeline
- Work No. 2B - Natural Gas Connection - Above Ground Installation
- Work No. 6A.1 - Hydrogen Distribution Network - Overground and Underground Pipelines
- Work No. 6B.1 - Hydrogen Distribution Network - Above Ground Installations
- Work No. 9 - Temporary Construction Compounds
- Work No. 10A.1 - Access Highway Improvements and Use



Infrastructure Planning
(Applications: Prescribed Forms
and Procedure) Regulations 2009
Regulation 5(2)(j).



NOTES

- 1: Reproduced from Ordnance Survey digital map data © Crown copyright 2024. All rights reserved. License number 0100031673.
- 2: Contains Ordnance Survey Data © Crown Copyright and database right 2024.

APPLICATION REFERENCE

H2T_March24_DCO_2.4a_Rev0

ISSUE PURPOSE

FOR EXAMINATION

PROJECT NUMBER

60689030

DRAWING TITLE

Work Plans Summary

SHEET NUMBER

Sheet 6 of 11

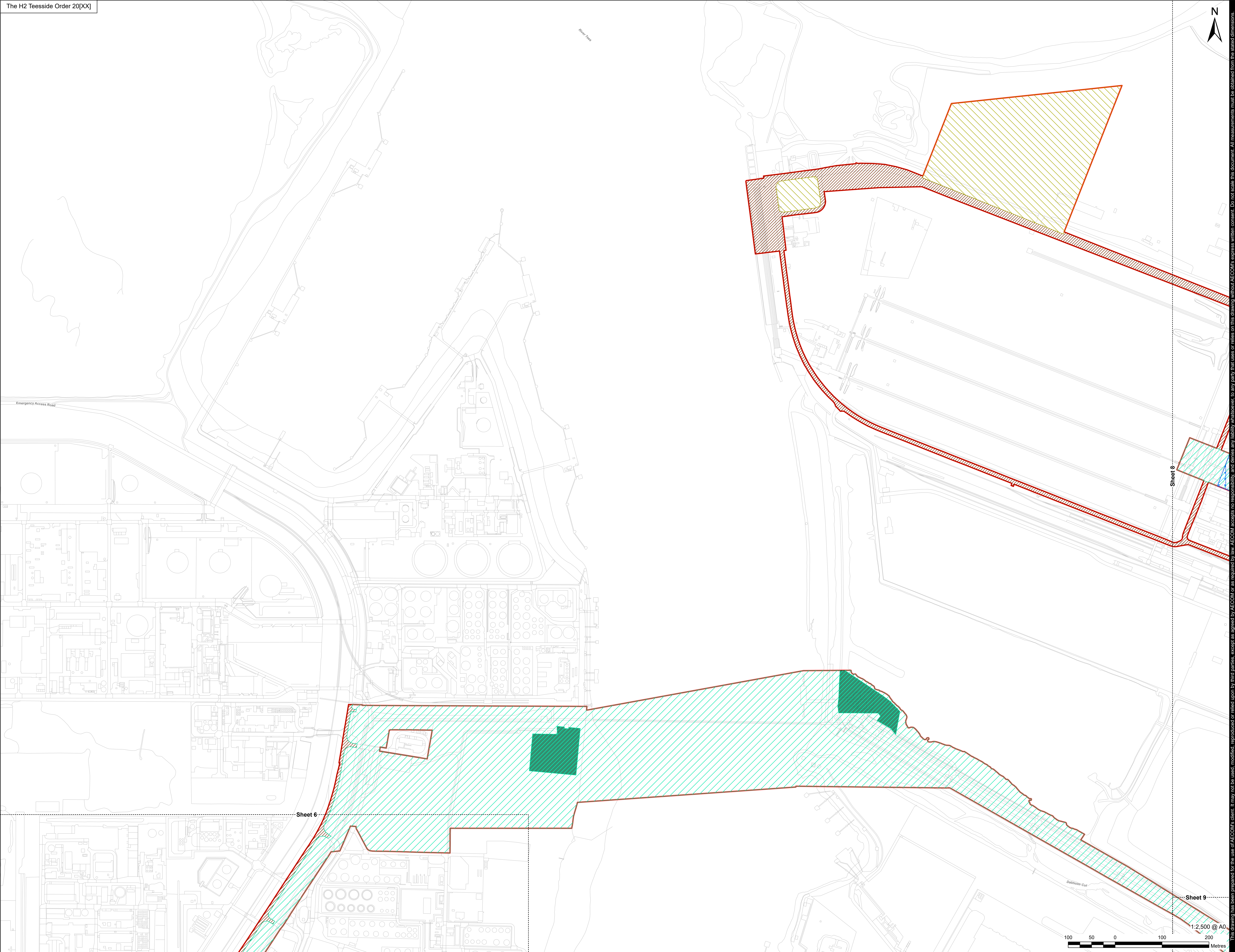


This drawing has been prepared for the use of AECOM's client. It may not be used, modified, reproduced or relied upon by third parties, except as agreed by AECOM, or as required by law. AECOM accepts no responsibility, and denies any liability, whatsoever, to any party that uses or relies on this drawing without AECOM's express written consent. Do not scale this document. All measurements must be obtained from the stated dimensions.

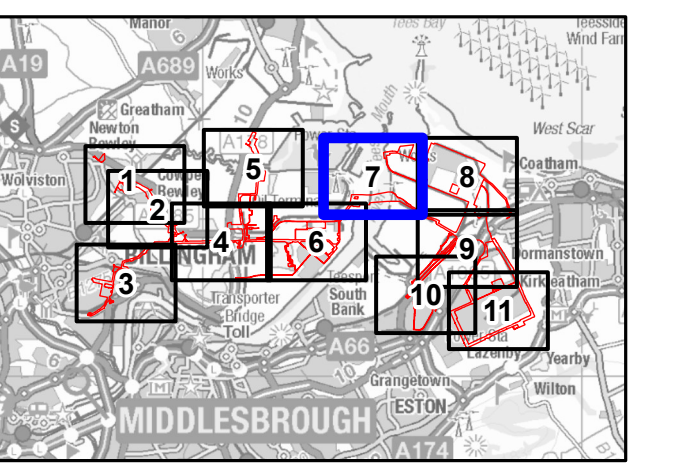


AECOM Limited
100 Embankment,
Cathedral Approach,
Manchester, M3 7FB
www.aecom.com

- Order Limits
- Detailed Sheet Number
- Work No. 1A.2 - Phase 2 Hydrogen Unit
- Work No. 1B.2 - Water Connections and Water and Effluent Treatment Plant for Work No. 1A.2
- Work No. 1C - Above Ground Pressurised Hydrogen Storage
- Work No. 1D - Administration, Control Room and Stores
- Work No. 6A.1 - Hydrogen Distribution Network - Overground and Underground Pipelines
- Work No. 6B.1 - Hydrogen Distribution Network - Above Ground Installations
- Work No. 9 - Temporary Construction Compounds
- Work No. 10A.1 - Access Highway Improvements and Use



Infrastructure Planning
(Applications: Prescribed Forms and Procedure) Regulations 2009 Regulation 5(2)(j).



NOTES

- 1: Reproduced from Ordnance Survey digital map data © Crown copyright 2024. All rights reserved. License number 0100031673.
- 2: Contains Ordnance Survey Data © Crown Copyright and database right 2024.

APPLICATION REFERENCE

H2T_March24_DCO_2.4a_Rev0

ISSUE PURPOSE

FOR EXAMINATION

PROJECT NUMBER

60689030

DRAWING TITLE

Work Plans Summary

SHEET NUMBER

Sheet 7 of 11



This drawing has been prepared for the use of AECOM's client. It may not be used, modified, reproduced or relied upon by third parties, except as agreed by AECOM, or as required by law. AECOM accepts no responsibility, and denies any liability, whatsoever, to any party that uses or relies on this drawing without AECOM's express written consent. Do not scale this document. All measurements must be obtained from the stated dimensions.



APPLICANT

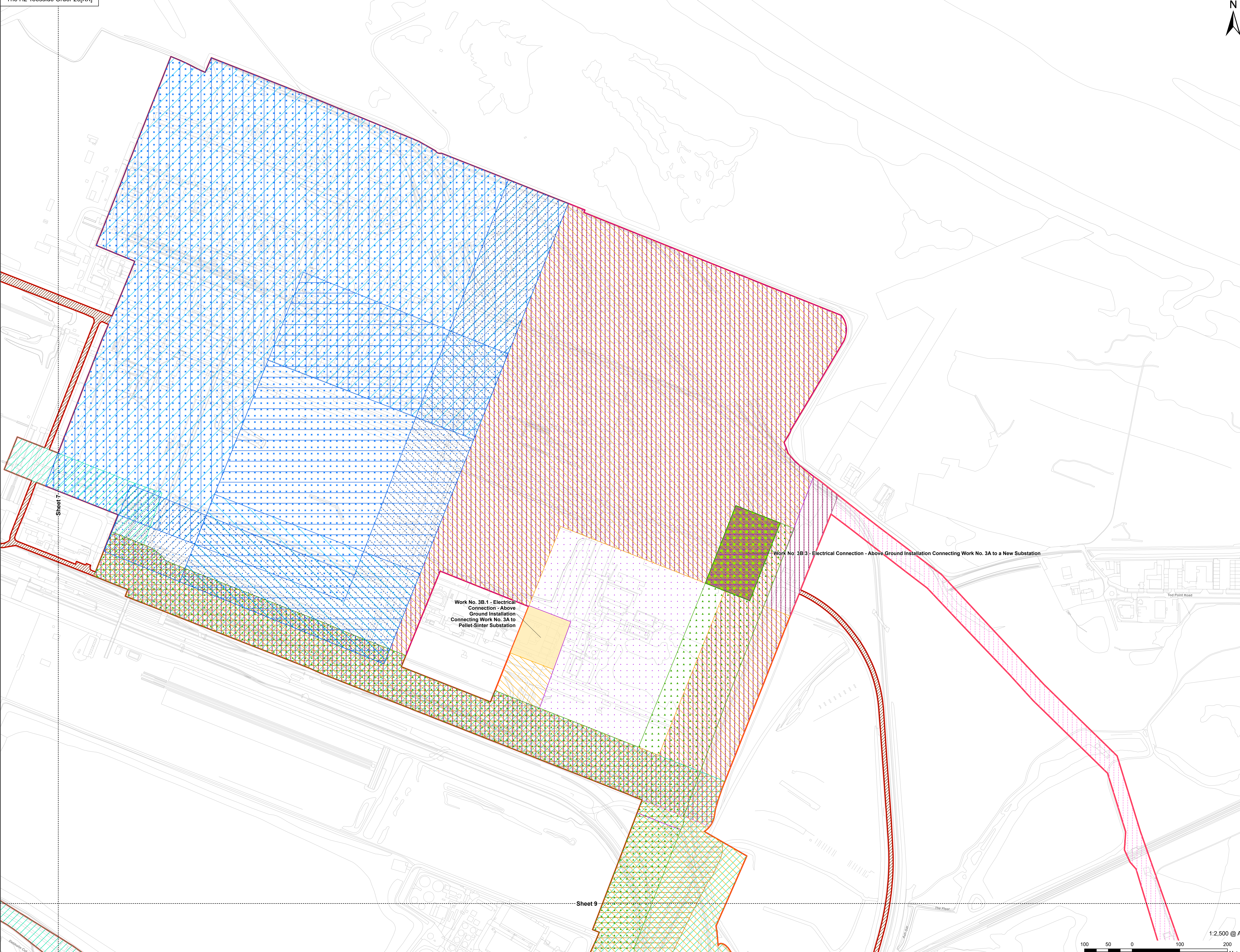


CONSULTANT

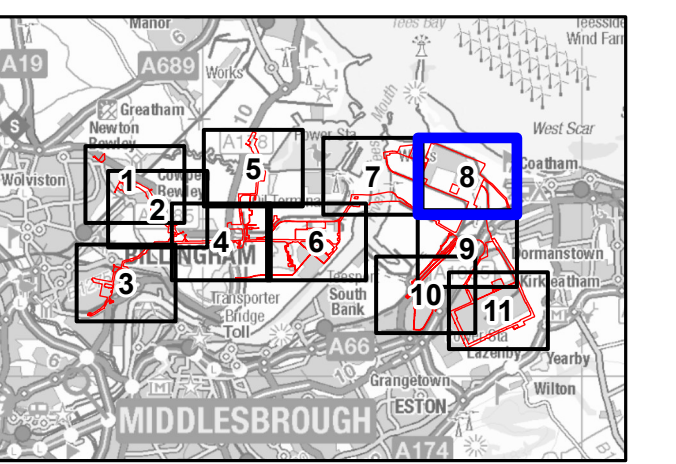
AECOM Limited
100 Embankment,
Cathedral Approach,
Manchester, M3 7FB
www.aecom.com

LEGEND

- Order Limits
- Detailed Sheet Number
- Work No. 1A.1 - Phase 1 Hydrogen Unit
- Work No. 1A.2 - Phase 2 Hydrogen Unit
- Work No. 1B.1 - Water Connections and Water and Effluent Treatment Plant for Work Nos. 1A.1 and 1A.2
- Work No. 1B.2 - Water Connections and Water and Effluent Treatment Plant for Work No. 1A.2
- Work No. 1C - Above Ground Pressurised Hydrogen Storage
- Work No. 1D - Administration, Control Room and Stores
- Work No. 1E.1 - Connections and Ancillary Works in Connection with Work Nos. 1A.1, 1A.2, 1C and 1D
- Work No. 1E.2 - Connections and Ancillary Works in Connection with Work No. 1A.2
- Work No. 2A - Natural Gas Connection - Underground High Pressure Gas Pipeline
- Work No. 2B - Natural Gas Connection - Above Ground Installation
- Work No. 3A - Electrical Connection Works
- Work No. 3B.1 - Electrical Connection - Above Ground Installation Connecting Work No. 3A to Pellet-Sinter Substation
- Work No. 3B.3 - Electrical Connection - Above Ground Installation Connecting Work No. 3A to a New Substation
- Work No. 4 - Water Supply Connection Works
- Work No. 5 - Wastewater Disposal Works
- Work No. 6A.1 - Hydrogen Distribution Network - Overground and Underground Pipelines
- Work No. 7A - Carbon Dioxide - Export Pipeline
- Work No. 7B - Carbon Dioxide - Above Ground Installation
- Work No. 8 - Oxygen and Nitrogen Gas Connections
- Work No. 10A.1 - Access Highway Improvements and Use



Infrastructure Planning
(Applications: Prescribed Forms
and Procedure) Regulations 2009
Regulation 5(2)(j).



NOTES

- 1: Reproduced from Ordnance Survey digital map data © Crown copyright 2024. All rights reserved. License number 0100031673.
- 2: Contains Ordnance Survey Data © Crown Copyright and database right 2024.

APPLICATION REFERENCE

H2T_March24_DCO_2.4a_Rev0

ISSUE PURPOSE

FOR EXAMINATION

PROJECT NUMBER

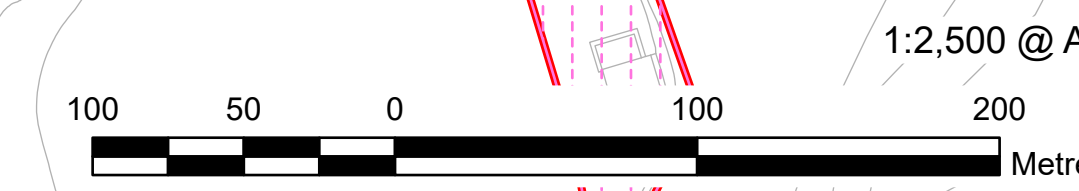
60689030

DRAWING TITLE

Work Plans Summary

SHEET NUMBER

Sheet 8 of 11



1:2,500 @ A0

Metres

Sheet 8 of 11

Revision: 00



AECOM Limited
100 Embankment,
Cathedral Approach,
Manchester, M3 7FB
www.aecom.com

- Order Limits
- Detailed Sheet Number
- Work No. 2A - Natural Gas Connection - Underground High Pressure Gas Pipeline
- Work No. 2B - Natural Gas Connection - Above Ground Installation
- Work No. 3A - Electrical Connection Works
- Work No. 3B.2 - Electrical Connection - Above Ground Installation Connecting Work No. 3A to Tod Point Substation
- Work No. 4 - Water Supply Connection Works
- Work No. 6A.1 - Hydrogen Distribution Network - Overground and Underground Pipelines
- Work No. 6B.1 - Hydrogen Distribution Network - Above Ground Installations
- Work No. 8 - Oxygen and Nitrogen Gas Connections
- Work No. 9 - Temporary Construction Compounds
- Work No. 10A.1 - Access Highway Improvements and Use

Sheet 7

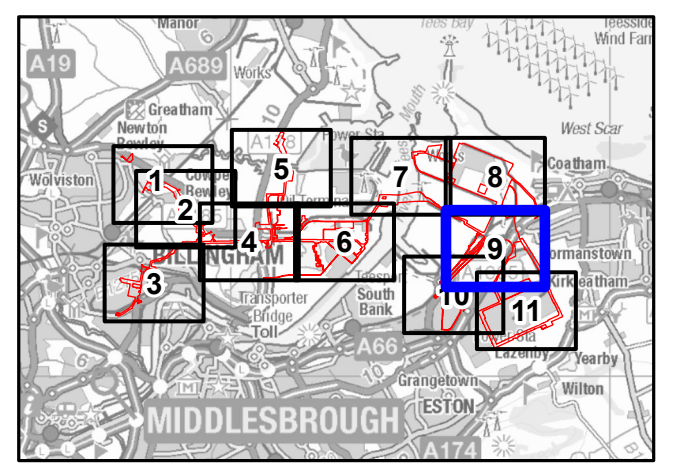
Sheet 8

Work No. 3B.2 - Electrical Connection - Above Ground Installation Connecting Work No. 3A to Tod Point Substation

Sheet 10

Sheet 11

Infrastructure Planning
(Applications: Prescribed Forms and Procedure) Regulations 2009
Regulation 5(2)(j).



NOTES

- 1: Reproduced from Ordnance Survey digital map data © Crown copyright 2024. All rights reserved. License number 0100031673.
- 2: Contains Ordnance Survey Data © Crown Copyright and database right 2024.

APPLICATION REFERENCE

H2T_March24_DCO_2.4a_Rev0

ISSUE PURPOSE

FOR EXAMINATION

PROJECT NUMBER

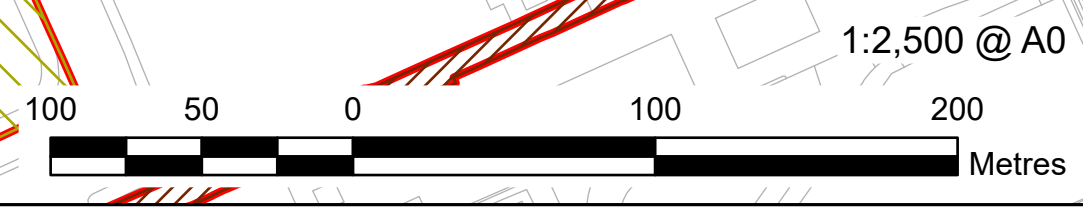
60689030

DRAWING TITLE

Work Plans Summary

SHEET NUMBER

Sheet 9 of 11

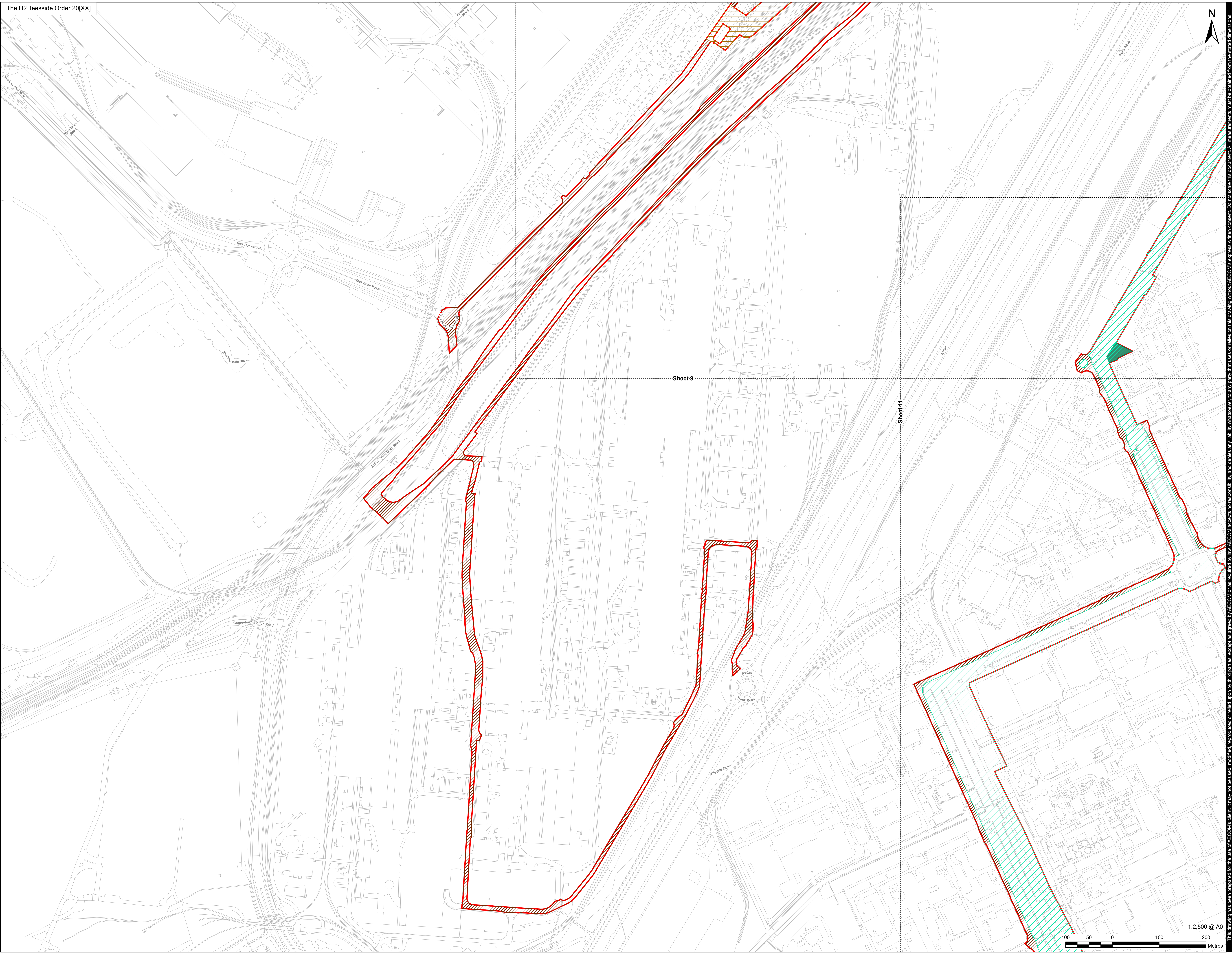


This drawing has been prepared for the use of AECOM's client. It may not be used, modified, reproduced or relied upon by third parties, except as agreed by AECOM, and AECOM accepts no responsibility, and denies any liability, whatsoever, to any party that uses or relies on this drawing without AECOM's express written consent. Do not scale this document. All measurements must be obtained from the stated dimensions.



AECOM Limited
100 Embankment,
Cathedral Approach,
Manchester, M3 7FB
www.aecom.com

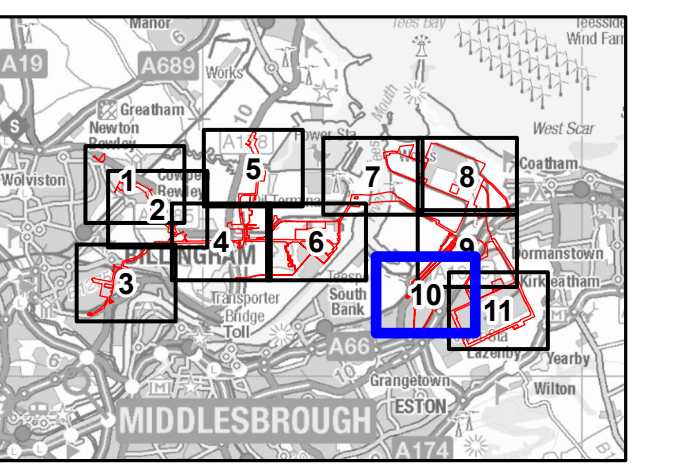
- Order Limits
- Detailed Sheet Number
- Work No. 6A.1 - Hydrogen Distribution Network - Overground and Underground Pipelines
- Work No. 6B.1 - Hydrogen Distribution Network - Above Ground Installations
- Work No. 8 - Oxygen and Nitrogen Gas Connections
- Work No. 10A.1 - Access Highway Improvements and Use



Sheet 9

Sheet 11

Infrastructure Planning
(Applications: Prescribed Forms and Procedure) Regulations 2009 Regulation 5(2)(j).



NOTES
1: Reproduced from Ordnance Survey digital map data © Crown copyright 2024. All rights reserved. License number 0100031673.
2: Contains Ordnance Survey Data © Crown Copyright and database right 2024.

APPLICATION REFERENCE
H2T_March24_DCO_2.4a_Rev0

ISSUE PURPOSE
FOR EXAMINATION

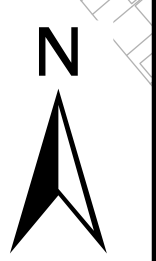
PROJECT NUMBER
60689030

DRAWING TITLE
Work Plans Summary

SHEET NUMBER
Sheet 10 of 11



This drawing has been prepared for the use of AECOM's client. It may not be used, modified, reproduced or relied upon by third parties, except as agreed by AECOM, and denies any liability, whatsoever, to any party that uses or relies on this drawing without AECOM's express written consent. Do not scale this document. All measurements must be obtained from the stated dimensions.



APPLICANT

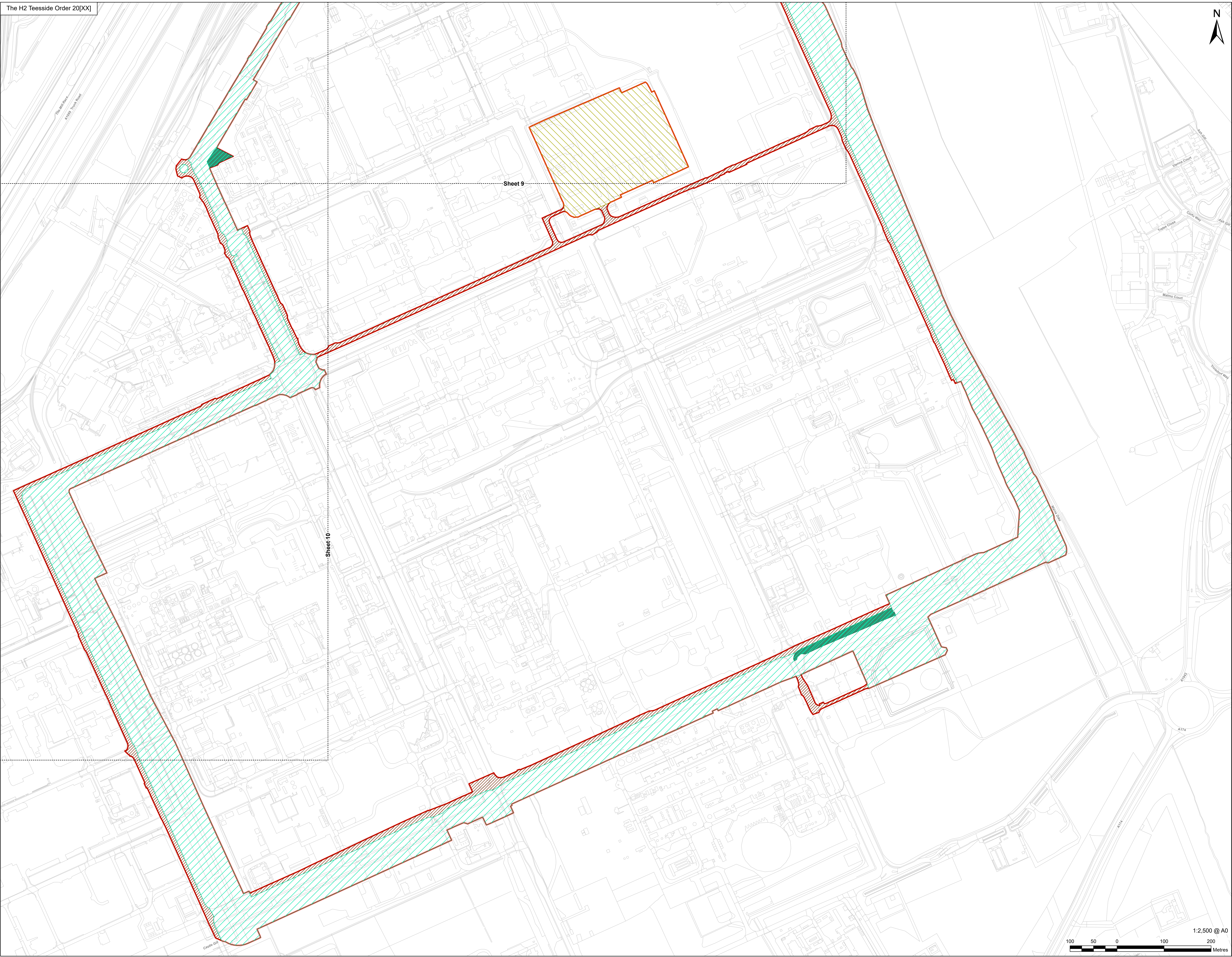


CONSULTANT

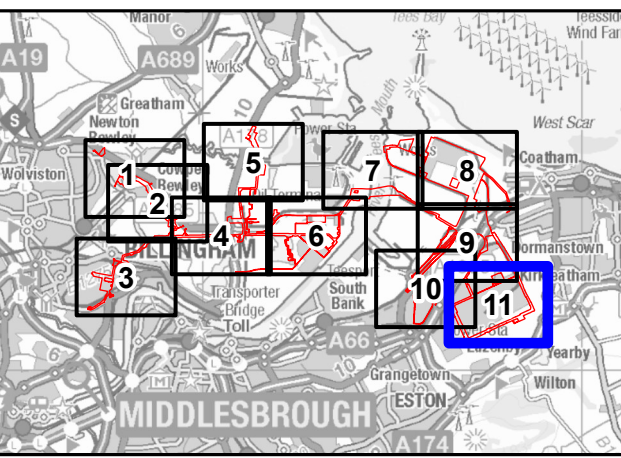
AECOM Limited
100 Embankment,
Cathedral Approach,
Manchester, M3 7FB
www.aecom.com

LEGEND

- Order Limits
- Detailed Sheet Number
- Work No. 6A.1 - Hydrogen Distribution Network - Overground and Underground Pipelines
- Work No. 6B.1 - Hydrogen Distribution Network - Above Ground Installations
- Work No. 9 - Temporary Construction Compounds
- Work No. 10A.1 - Access Highway Improvements and Use



Infrastructure Planning
(Applications: Prescribed Forms
and Procedure) Regulations 2009
Regulation 5(2)(j).



NOTES

- 1: Reproduced from Ordnance Survey digital map data © Crown copyright 2024. All rights reserved. License number 0100031673.
- 2: Contains Ordnance Survey Data © Crown Copyright and database right 2024.

APPLICATION REFERENCE

H2T_March24_DCO_2.4a_Rev0

ISSUE PURPOSE

FOR EXAMINATION

PROJECT NUMBER

60689030

DRAWING TITLE

Work Plans Summary

SHEET NUMBER

Sheet 11 of 11

This drawing has been prepared for the use of AECOM's client. It may not be used, modified, reproduced or relied upon by third parties, except as agreed by AECOM, or as required by law. AECOM accepts no responsibility, and denies any liability, whatsoever, to any party that uses or relies on this drawing without AECOM's express written consent. All measurements must be obtained from the stated dimensions.